

K179 ASSEMBLY AND FITTING INSTRUCTIONS

Kit Contains

1 x Set of Assembly Instructions
1 x Hex Key, 5mm
4 x Clamps
4 x Capscrews, M8 x30
4 x Plastic Washers, M8
4 x Steel Washers, M8

Contact your supplier if any items are missing

Items you may require that are not included:

Tape Measure
Step Ladder (for taller vehicles)

Important Notes:

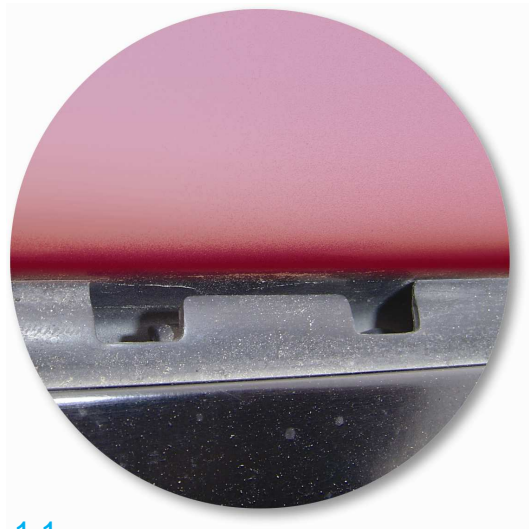
Disregard sections 2 - 5 in the Crossbar Assembly Instructions and refer to these instead.

Maximum
P-Bar
Load
Rating

65
kg

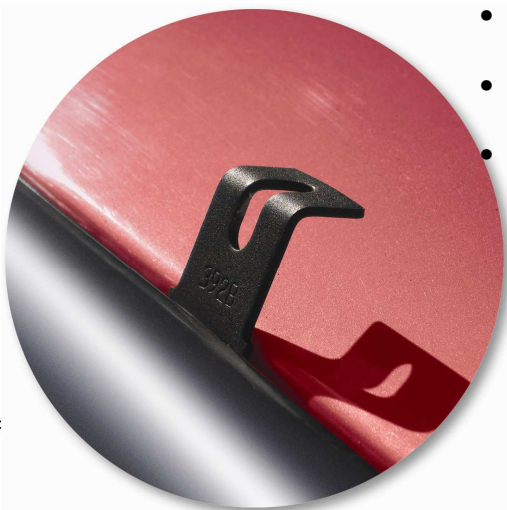
When Fitted and loaded correctly

1. Crossbar Legs And Internal Clamp Preparation



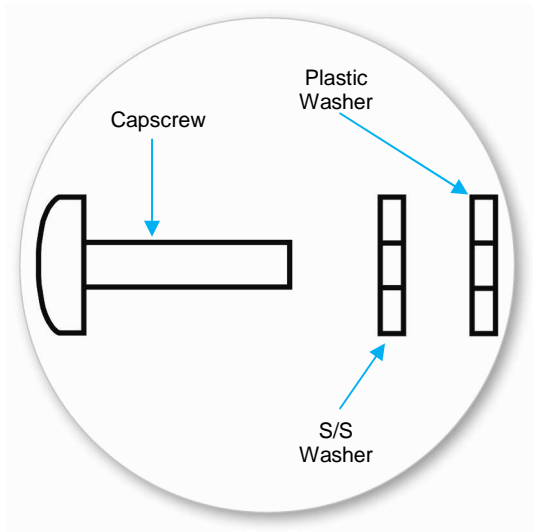
1.1

- Remove the bottom adjusting screw
- Run your fingers along the inner edge of the leg
- Fit a rubber pad to the mounting hooks surface of each leg.
- There are two studs for correct location



- Pull ditch moulding towards yourself to get an access to the mounting hooks
- Hook the clamps on to the mounting hooks
- Top bend of the clamp should point to the roof centre
- Repeat for all four locations

2. Crossbar Fitment



2.1



2.2

- Place Crossbar assemblies over the clamps
- Move Legs in or out to match clamp positions
- Place steel and plastic washers on M8 capscrew in a same sequence as shown on the picture above

- Press down on crossbar to line up the thread on square nut in the foot and clamp
- Attach leg to clamp by fitting M8 capscrew through the clamp and screwing it into the square nut inside of the foot
- Repeat for all four clamps



- Tighten M8 capscrews to 4Nm
- Press leg inwards and pull crossbar out to adjust position of crossbar on legs
- Check that crossbar overhang is even on each side
- Tighten top adjusting screw to 4Nm
- Fit the four leg cover panels by hooking them in at top first then clipping them in at the sides.

Warning Notes

- Use these instruction in conjunction with crossbar instructions

WARNING: Check the Tightness of Screws Regularly