



Fishing Rod Holder

First Time Installation

- Please read instructions carefully before installation.
- Check the contents of kit. Contact your Prorack dealer if any parts appear to be missing or damaged.
- Clean your roof racks prior to fitting the Fishing Rod Holder.

Important Warning

- It is critical that all Prorack racks and accessories be properly and securely attached to your vehicle. Improper attachment could result in an automobile accident, and could cause serious bodily injury or death to you or to others.
- You are responsible for securing the racks and accessories to your car, checking the attachments prior to use, and periodically inspecting the products for adjustment, wear, and damage.
- If you do not understand all of the instructions and cautions, or if you have no mechanical experience and are not thoroughly familiar with the installation procedures, you should have the product installed by a professional installer such as a roof rack specialist.

Contents

Installation onto Trade and other Heavy Duty Crossbars
Go to Page 2

Installation onto Prorack Aero and International T-Slot Crossbars
Go to Page 3

Installation onto Prorack Standard and other square Crossbars
Go to Page 4

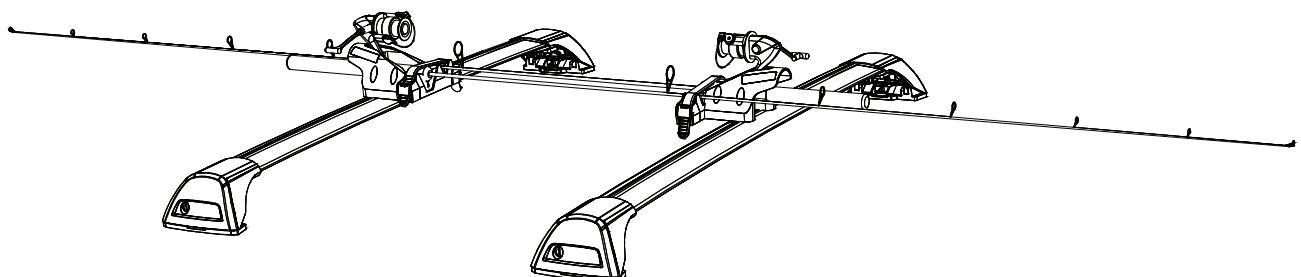
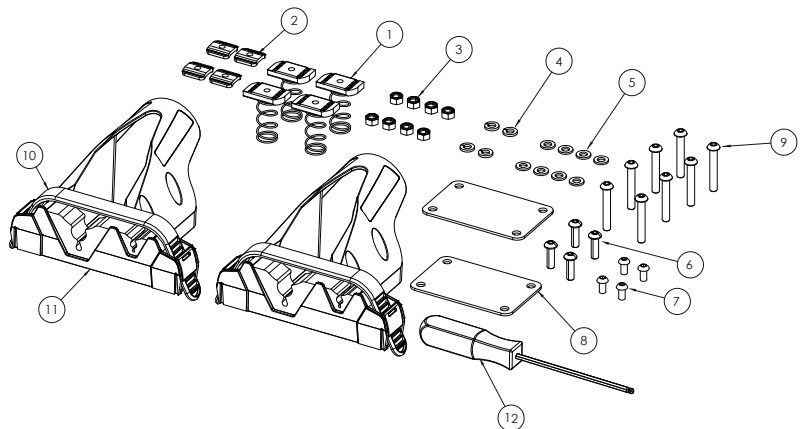
Tools Required

- 10 mm Spanner or Torque Wrench
(for Standard Bar fitment only)

Kit Contents

Item	Component	Qty
1	M6 Spring Nut	4
2	M6 Slot Nut	4
3	M6 Nylock Nut	8
4	M6 Spring Washer	4
5	M6 Washer	8
6	M6 Button Head Capscrew 20 mm	4
7	M6 Button Head Capscrew 12 mm	4
8	Clamp Plate For P-Bar	2
9	M6 Button Head Capscrew 40 mm	8
10	Fishing Rod Holder Zip Strap	2
11	Fishing Rod Holder Body	2
12	Screwdriver Allen Key 4 mm	1

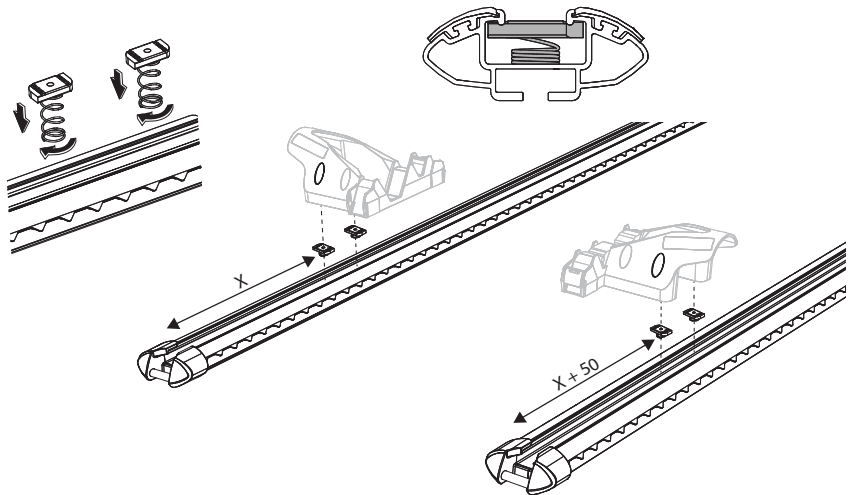
PR3217



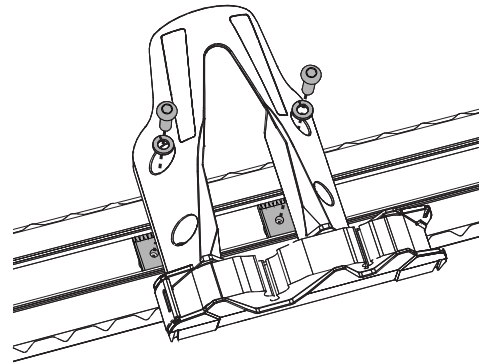
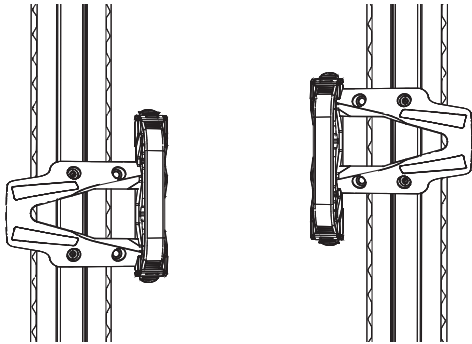
Installation onto Prorack Heavy Duty, Trade and other Heavy Duty Crossbars

- 1** Insert 2x M6 Spring Nuts as pictured. Push Spring Nuts down into the crossbar channels and twist to lock into place as pictured.

Use the Rod Holder Body to ensure Spring Nuts align with the two rear holes in the base of Rod Holder Body.

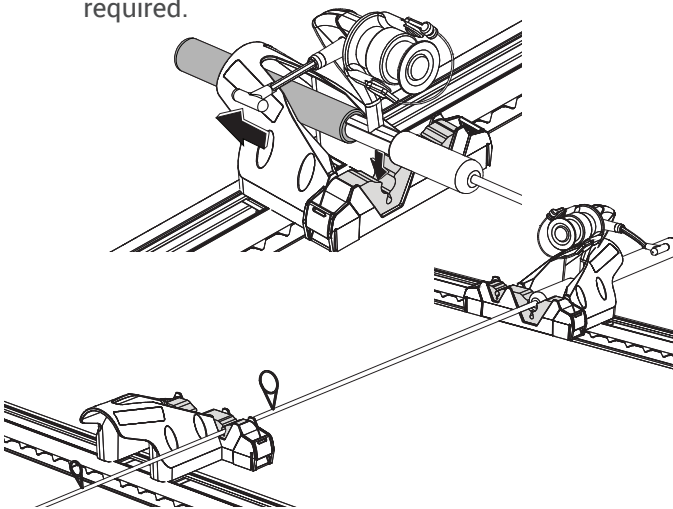


- 2** Position the Rod Holder Bodies on each crossbar with the strap/foam ends pointing towards each other. Secure the 2x Rod Holder Bodies to the M6 Spring Nuts in the crossbars using the M6 x 20 mm Button Head Capscrews and M6 Spring Washers via the rear holes as shown. Tighten to 4 Nm with 4 mm Allen Key Screwdriver provided or a suitable Torque Wrench.



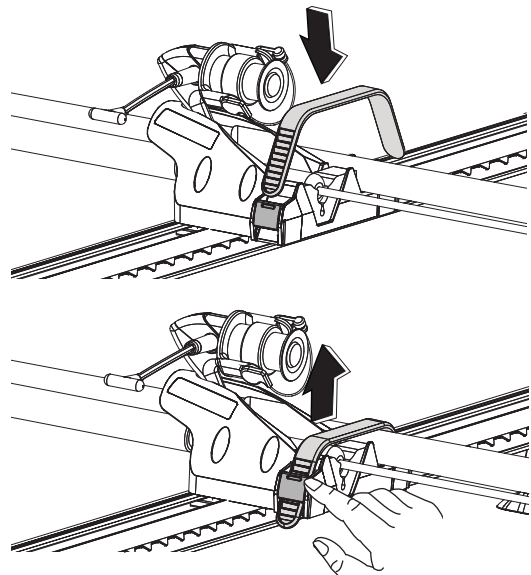
- 3** Your Fishing Rod Holder is now fitted and ready for use.

To use, place handle end of rod back into the main opening of the Rod Holder Body and down into the foam. Place the rod tip into the foam on the opposite Rod Holder Body as shown. Repeat for multiple rods, utilising the opposite end as required.



- 4** To secure rods, push the Zip Straps into the Buckles on either side of the Rod Holders.

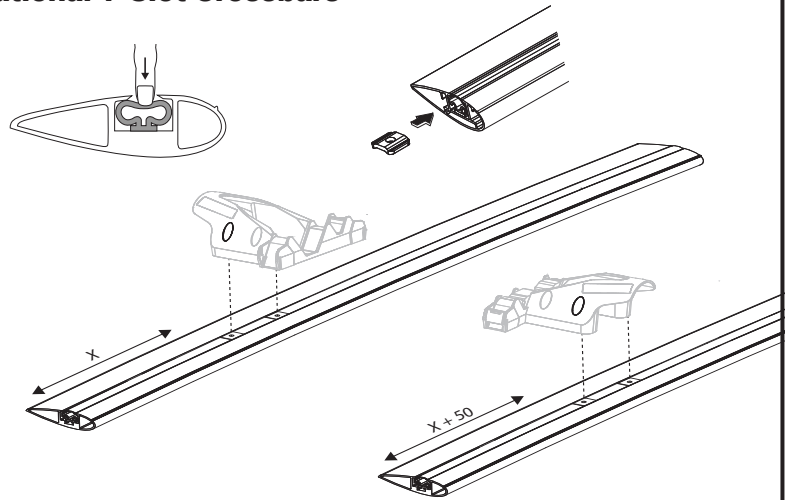
To release, push the top end of the Buckles inwards and lift Strap.



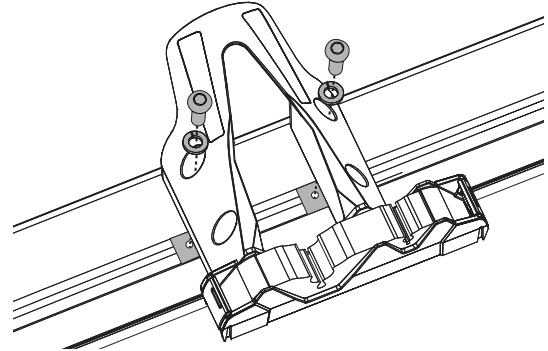
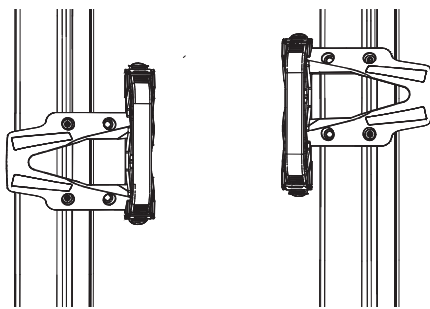
Installation onto Prorack Aero and International T-Slot Crossbars

- 1** Push rubber infill down and slide 2x M6 Slot Nuts into each crossbar channel as pictured. The 4 mm Screwdriver Alley Key can be used to assist Slot Nut installation into the channel.

Use the Rod Holder Body to ensure Slot Nuts align with the two rear holes in the base of Rod Holder Body.

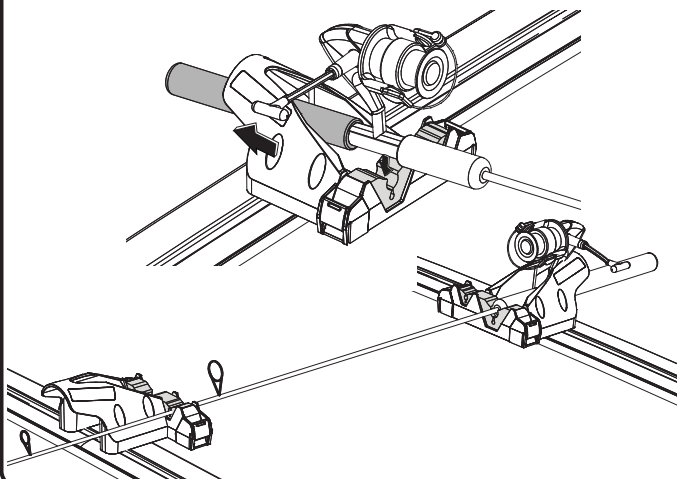


- 2** Position the Rod Holder Bodies on each crossbar with the strap/foam ends pointing towards each other. Secure the Rod Holder Bodies to the Slot Nuts in the crossbars using the M6 x 12 mm Button Head Capscrews and M6 Spring Washers via the rear holes as shown. Tighten to 4 Nm with 4 mm Allen Key Screwdriver provided or a suitable Torque Wrench.



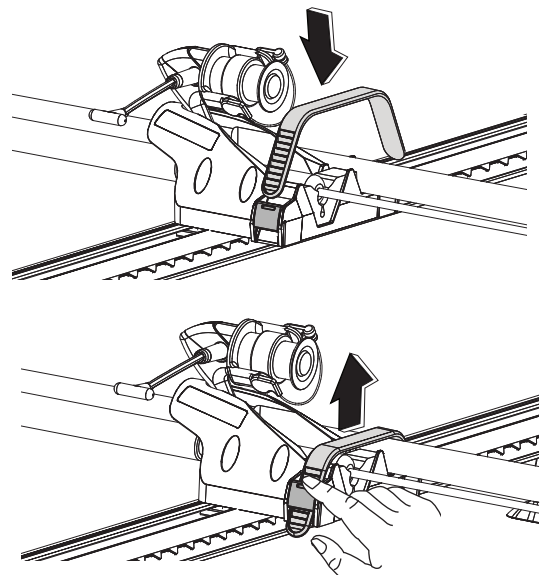
- 3** Your Fishing Rod Holder is now fitted and ready for use.

To use, place handle end of rod back into the main opening of the Rod Holder Body and down into the foam. Place the rod tip into the foam on the opposite Rod Holder Body as shown. Repeat for multiple rods, utilising the opposite end as required.



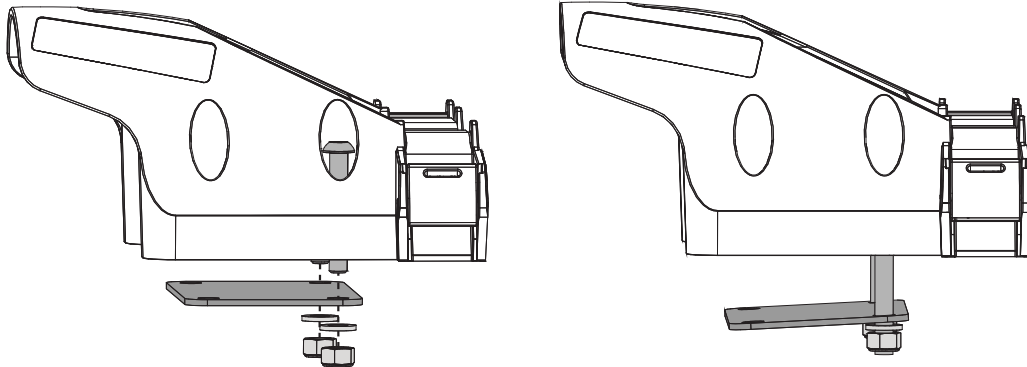
- 4** To secure rods, push the Zip Straps into the Buckles on either side of the Rod Holders.

To release, push the top end of the Buckles inwards and lift Strap.

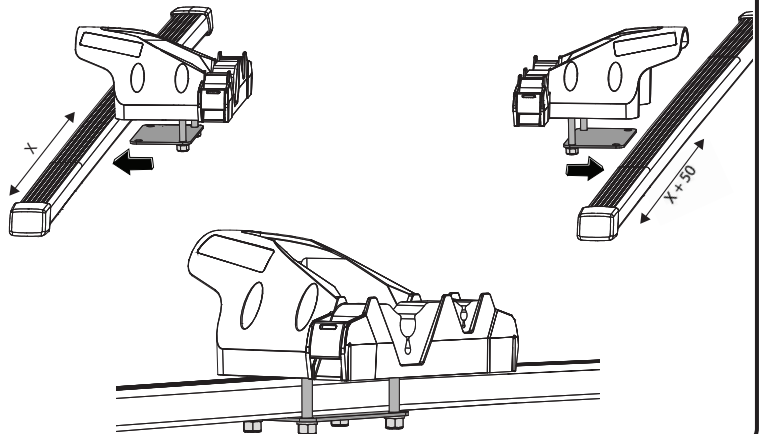


Installation onto Prorack Standard Bars and other square Crossbars

- 1** Loosely fasten the Clamp Plates to Rod Holder Bodies via the two inward facing holes (next to foam) using 2x M6 x 40 mm Button Head Capscrews, 2x M6 washers and 2x M6 Nyloc Nuts as shown.

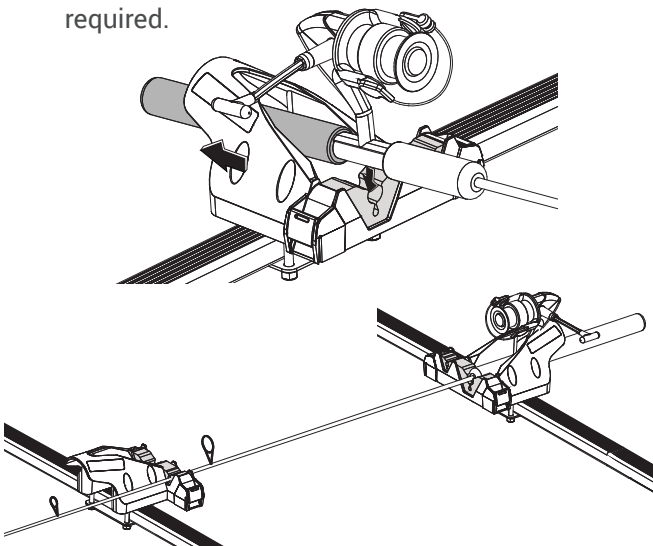


- 2** Position the Rod Holder Bodies on each crossbar with the strap/foam ends pointing towards each other. Slide the Clamp and Rod Holder assemblies onto crossbars as pictured. Install the remaining M6 x 40 mm Button Head Capscrews, M6 washers and M6 Nyloc Nuts into the outward facing holes. Tighten all Nuts to 4 Nm with a 10 mm spanner or a suitable Torque Wrench.



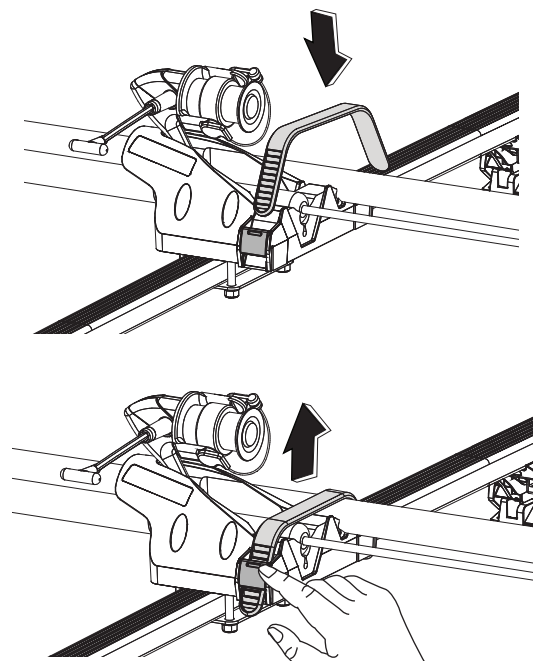
- 3** Your Fishing Rod Holder is now fitted and ready for use.

To use, place handle end of rod back into the main opening of the Rod Holder Body and down into the foam. Place the rod tip into the foam on the opposite Rod Holder Body as shown. Repeat for multiple rods, utilising the opposite end as required.



- 4** To secure rods, push the Zip Straps into the Buckles on either side of the Rod Holders.

To release, push the top end of the Buckles inwards and lift Strap.



Maintenance

- Check accessory is securely attached whenever you refit it to the vehicle. If the unit feels loose, refer to the fitting instructions and readjust.
- Regularly check all fasteners. This includes all attached accessories and roof racks.
- Clean with hot soapy water and sponge as required.

Caution

- The Fishing Rod Holder can carry up to 2 fishing rods with a maximum of 3kg per rod. Ensure all items are securely attached.
- A loaded roof rack system can alter the performance of your vehicle. Be especially aware of the effects of side winds, changing of direction, and braking performance. Avoid rapid acceleration and deceleration. Drive Carefully.
- Make sure all loads are securely fastened with the Zip Straps. Check regularly during longer journeys.
- Never drive into a car wash with the roof rack system or accessories fitted.
- Do not exceed the vehicle manufacturer's roof load rating. Total load equals weight of roof racks + accessories + cargo/ equipment.



Prorack
17 Hinkler Court, Brendale
QLD 4500, Australia

Freephone
AU: 1800 143 548
NZ: 0800 4776 722

www.prorack.com.au
www.prorack.co.nz